

Santa Monica's Urban Tree Canopy

URBAN FOREST MASTER PLAN MISSION STATEMENT

To ensure that all benefits of a healthy urban forest are available to Santa Monica residents and visitors for generations to come, to guide the perpetuation and enhancement of public tree canopy for the entire city, and to inform the community of the importance of the urban forest and the best practices to follow to help it thrive.

Urban Tree Canopy (UTC)

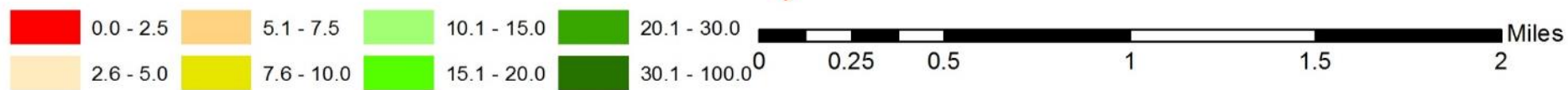
Atlanta, GA	37
Austin, TX	34
Boston, MA	29
Washington, DC	28
US National Average	
Seattle, WA	25
NYC & Los Angeles	21
Santa Monica, CA	21 (2005)
London, UK	20
Jersey City, NJ	12
Chicago, IL	11

2004-2009: NYC lost 1.2% area of UTC (Nowak and Greenfield, 2012)

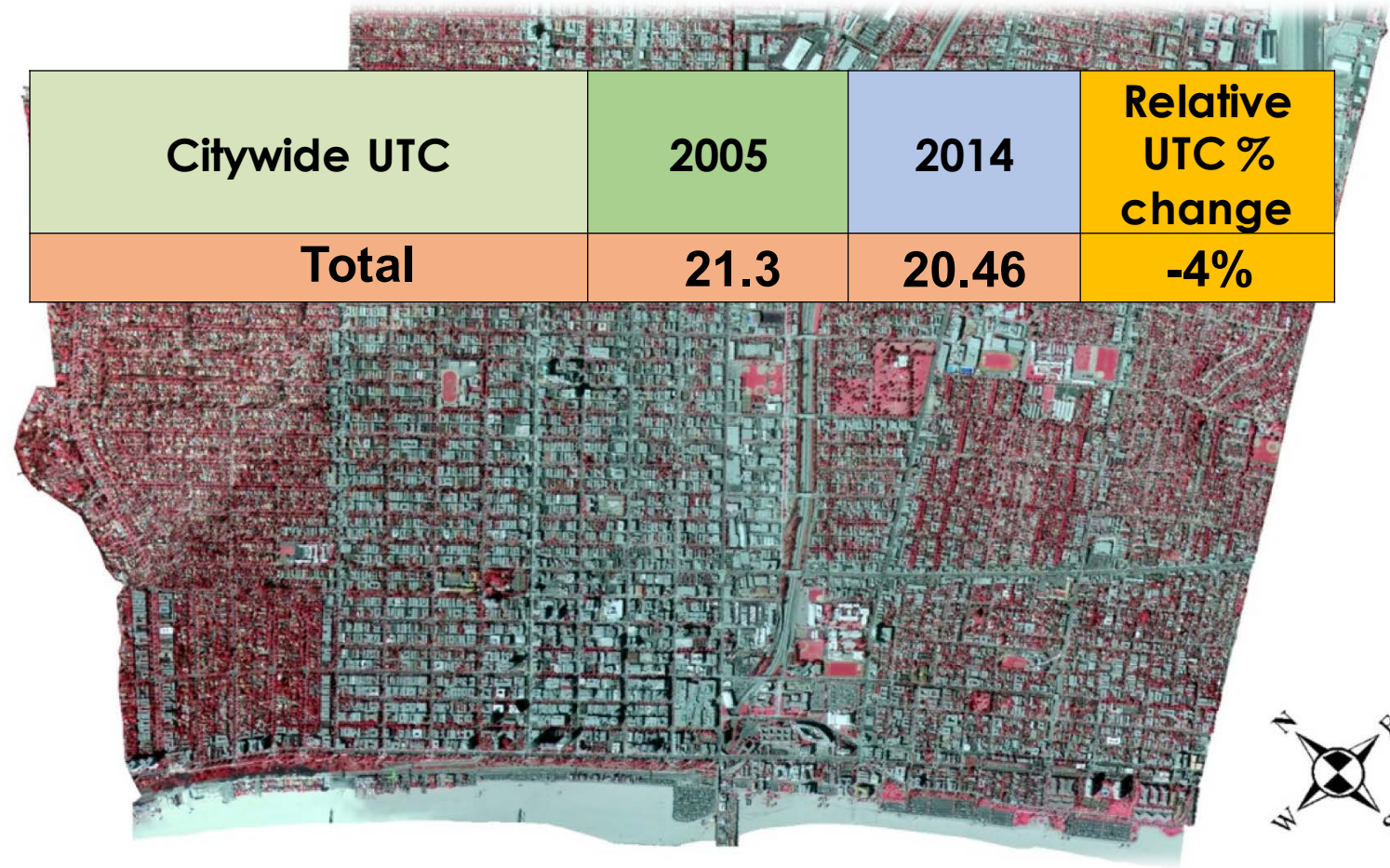
17 out of 20 US cities had significant UTC loss

Average UTC loss was 0.27% per year

UTC



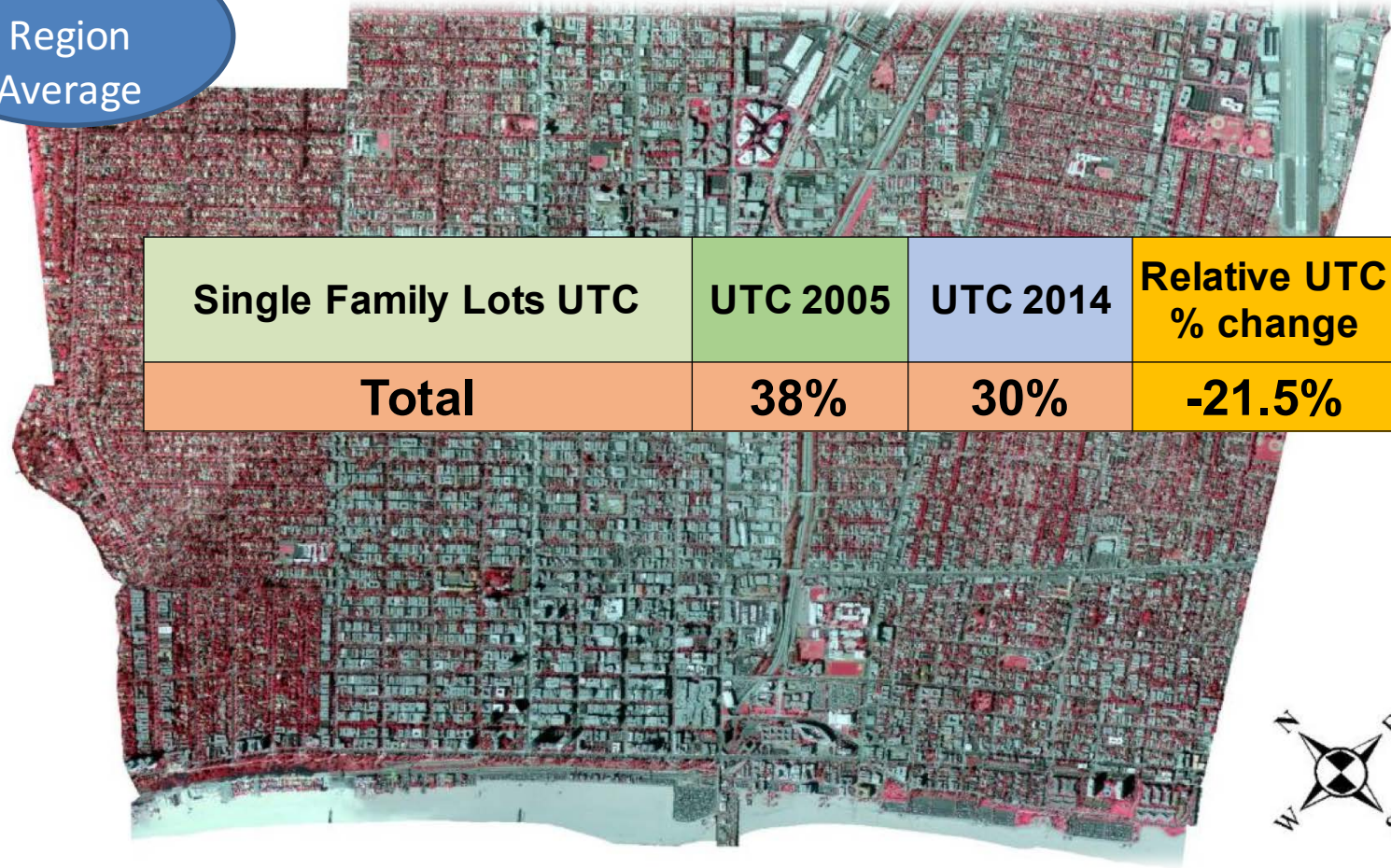
Santa Monica's UTC Loss 2005-2014



2005 NAIP Imagery

UTC & Residential Single Family Lots

-14%
Region
Average



2005 NAIP Imagery

UTC & Land Use

Land use	2005 UTC %	2014 UTC %	Change
Residential – Single Family	38.07	29.89	-21%
Residential – Multi-Family	15.81	19.02	20%
Commercial/Industrial/ Institutional	7.09	11.32	60%
Open Space	34.1	32.89	-4%
Transportation	8.58	9.85	15%
Citywide	21.3	20.46	-4%

How many trees?

Land use	2005	%Trees	2014	%Trees	%Change
Residential – Single Family	79,366	65%	62,377	53%	-21%
Residential – Multi-Family	22,183	18%	26,680	23%	20%
Commercial/Industrial/Institutional	12,166	10%	19,415	16%	60%
Open Space	6,277	5%	6,041	5%	-4%
Transportation	2,638	2%	3,031	3%	15%
Totals	122,891		118,077		-4%

- 118,000 trees in the City = 20% canopy
- 29% of SM trees are public (streets and parks etc.)
- 71% is private and unprotected
- 6% of 20% is protected
- **14% of City's 20% UTC is unprotected**

Figure 1

Size	Neighborhood
22%	Sunset Park
20%	Pico
18%	Noma
11%	Wilshire
9%	Ocean Park
9%	Mid City
5%	Northeast

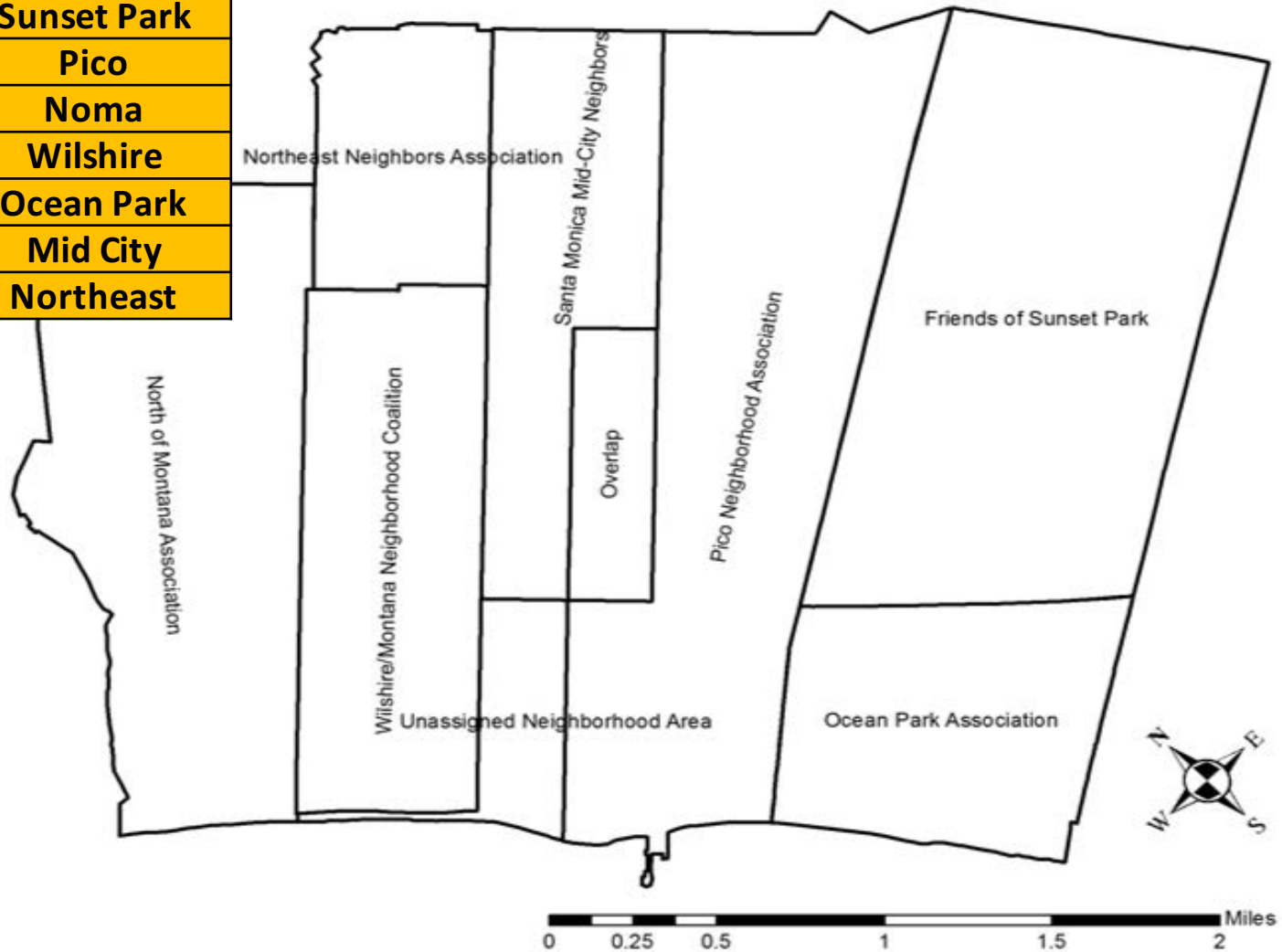


Figure 2. Santa Monica Neighborhoods

UTC and Neighborhoods

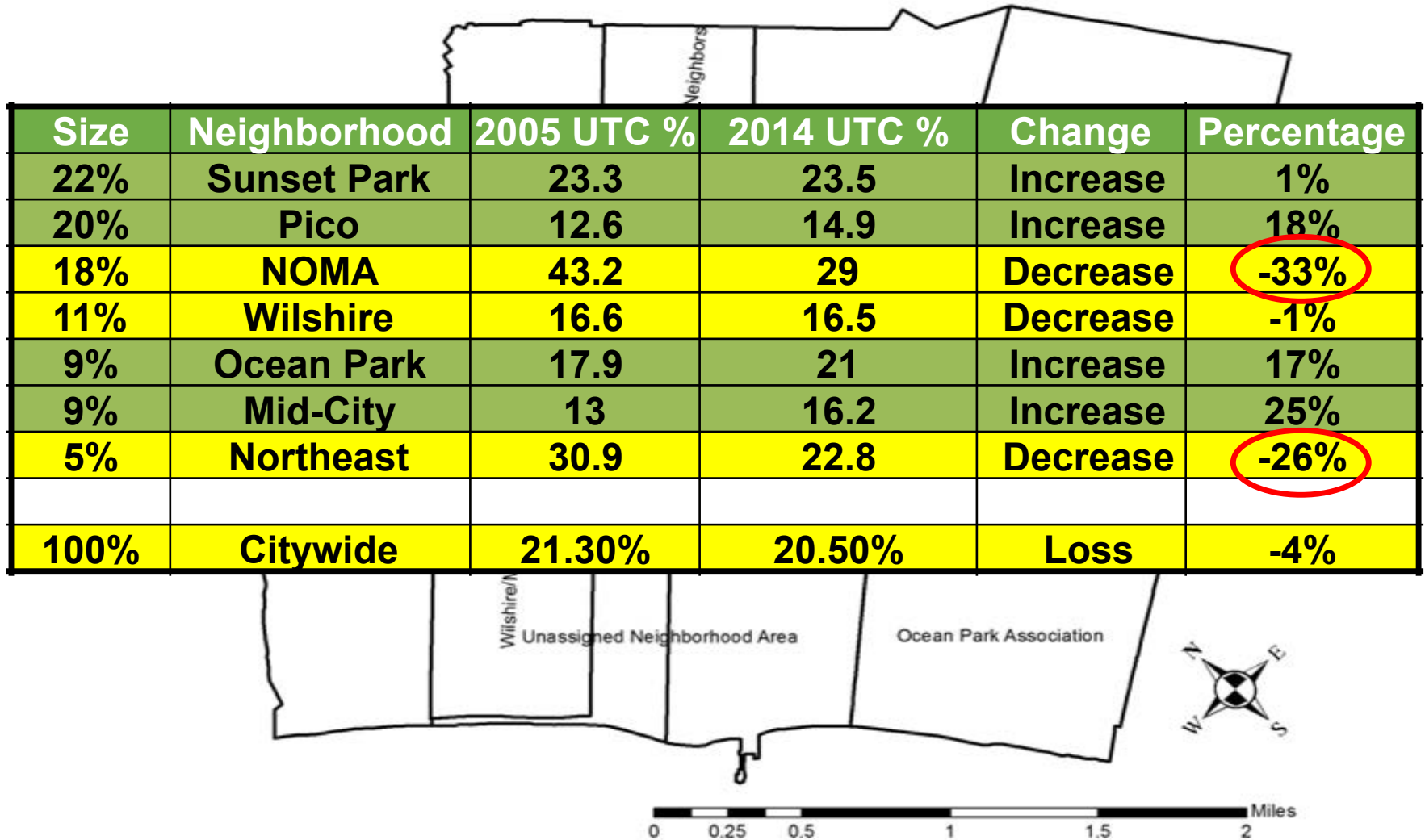


Figure 2. Santa Monica Neighborhoods

	NOMA		
Land use	2005	2014	Change
Commercial/Industrial	9.7%	8.3%	-14%
Open Space	53.7%	45.8%	-15%
Residential - MF	24.5%	17.9%	-27%
Residential - SF	45.5%	30%	-34%
Total	43.2%	29%	-33%
	North East Neighbors		
Land use	2005	2014	Change
Commercial/Industrial	6.4%	10.3%	61%
Open Space	28.4%	22.8%	-20%
Residential - MF	17.2%	15.9%	-8%
Residential - SF	35.8%	25.2%	-30%
Total	30.9%	22.8%	-26%

**Single-Family areas lost 21% of their canopy
from 2005-2014**

Oak Trees – LA County

- Need a permit to prune, transplant, damage or remove trees of the oak genus over 8" at four and a half feet above grade.

Native Trees – LA City

- Need a permit to remove certain native trees over 4" diameter at 4 ½ ' above grade. These species are:
 - Oak genus indigenous to California excluding scrub oak
 - Southern California black walnut
 - Western sycamore
 - California bay

- Santa Monica has ZERO tree protections – less than the City of Los Angeles!
- What happened to the Sustainable City?

Native Trees – Pasadena*

- **13 species**
- Trees must be **over 8" DBH** to qualify
- Species include:
 - California black walnut
 - Canyon live oak
 - California sycamore
 - Coast live oak
 - Valley oak
 - Englemann oak
 - Scrub oak
 - California buckeye

*City of Pasadena, 2002

Specimen Trees – Pasadena*

- Combination of desirable species and size (DBI)

Protected Species List For the City of Pasadena

Genus	Species	Common Name	Protection Size
<i>Acer</i>	<i>macrophyllum</i>	Bigleaf maple	20"
<i>Acer</i>	<i>buergeranum</i>	Trident maple	12"
<i>Acer</i>	<i>palmatum</i>	Japanese maple	12"
<i>Aesculus</i>	<i>x carnea</i>	Red horse chestnut	12"
<i>Aesculus</i>	<i>x hippocastamum</i>	Horse chestnut tree	12"
<i>Agonis</i>	<i>flexuosa</i>	Australian peppermint	12"
<i>Albizia</i>	<i>julibrissin</i>	Mimosa silk tree	20"
<i>Angophora</i>	<i>costata</i>	Gum myrtle	25"
<i>Araucaria</i>	<i>heterophylla</i>	Star pine	15"
<i>Arbutus</i>	<i>menziesii</i>	Pacific madrone	12"
<i>Arbutus</i>	<i>unedo</i>	Strawberry tree	12"

Example of Protected Trees from Pasadena (108 Total)

*City of Pasadena, 2002

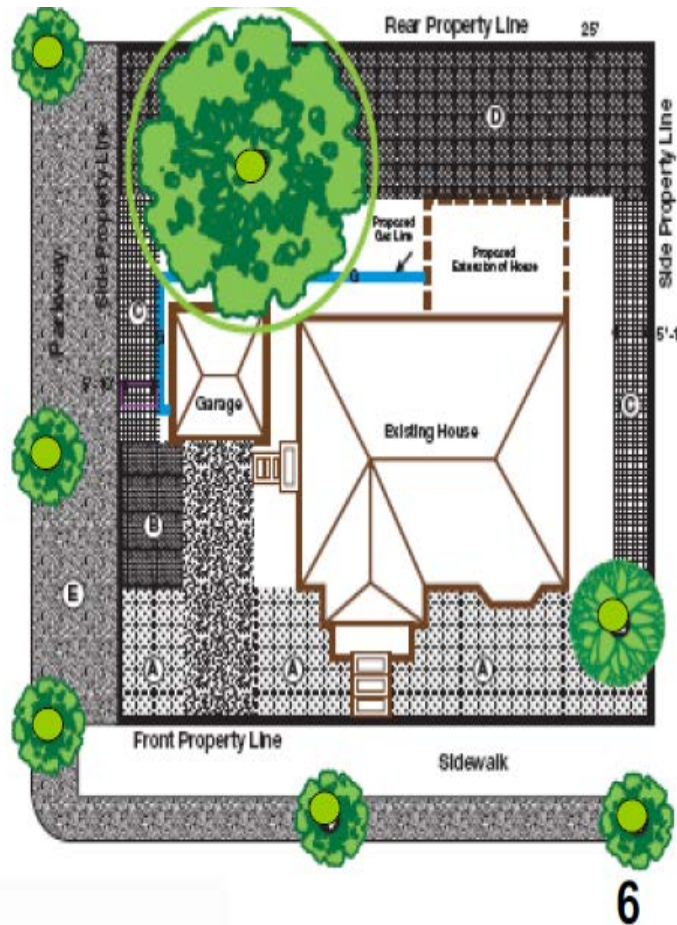
Where are they protected?

Where you can't build anyway!

In RS (Single Family) and RM-12 (duplex) zones

specimen and native trees are protected in the required setbacks:

- (D) Front yard
- (E) Corner yard
- (F) Side yard
- (G) Rear yard



If you have valid reasons for removal, there are allowances and remediation calculations

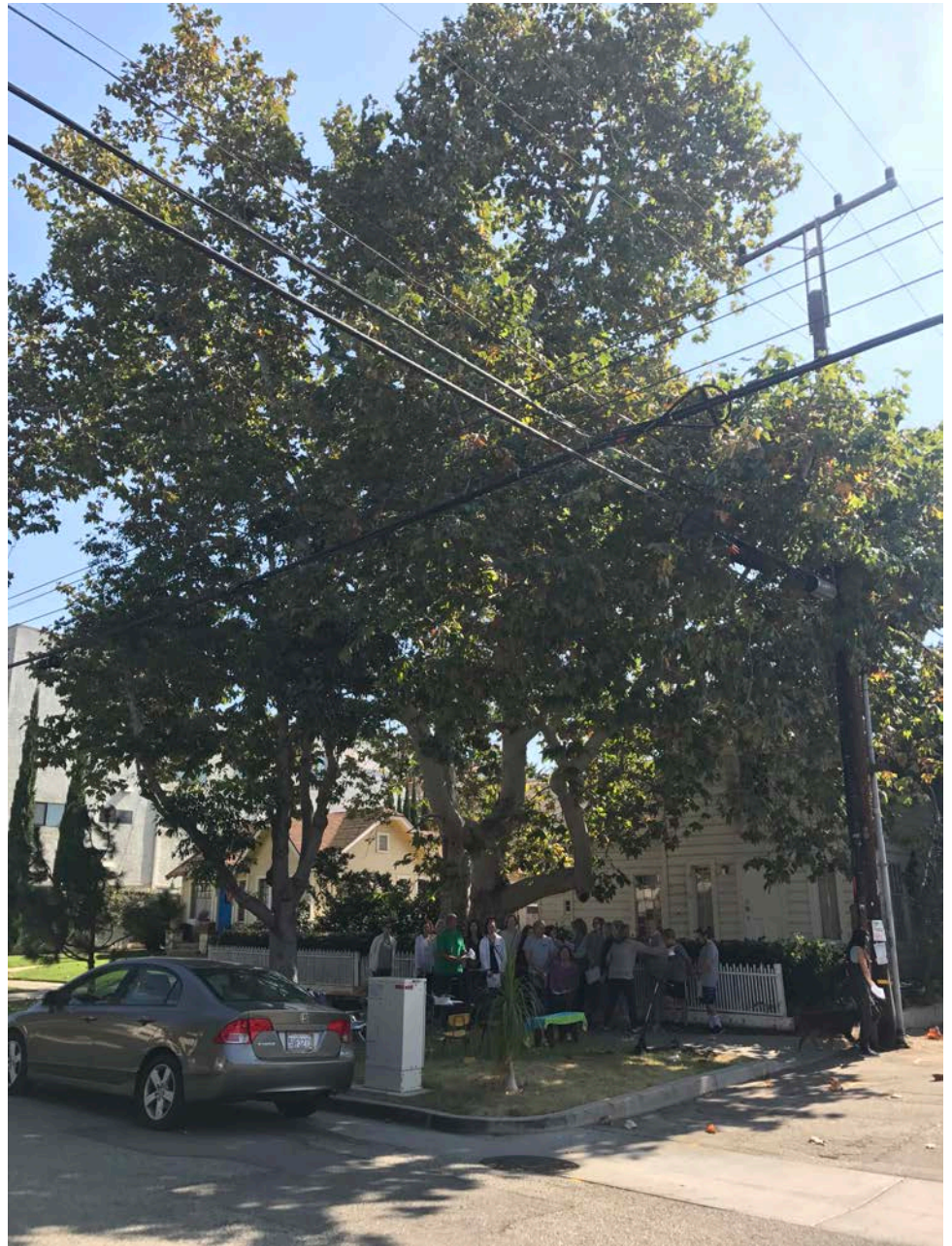
Santa Monica has NO TREE PROTECTION

- Trees in front setbacks we have lost:





1122
California:
The tree that
we saved



What do we need from NOMA?

- Public pressure to make sure that Santa Monica has SOME protections for SOME trees in setbacks
- City Manager has expressed zero interest
- What kind of city do we want to live in?